

# Humanities & Data Science Institute

January 9 – 13, 2022



<https://princeton-cdh.github.io/hds-institute/>

**who we are**

**who you are**

**why you were selected**

## the week's goals

empower humanists to engage  
with data science concepts

provide hands-on experience in  
data science methods

help you design a project  
informed by these methods

<b>9:00 – 10:00</b>	<b>Coffee &amp; Breakfast</b>
<b>10:00 – 12:30</b>	<b>Morning Session</b>
<b>12:30 – 1:30</b>	<b>Lunch</b>
<b>1:30 – 4:00</b>	<b>Afternoon Session</b>

post-its



= I MIGHT NEED  
SOME HELP SOON



= SOMETHING IS  
SERIOUSLY WRONG

# readings

## Tuesday: Fundamentals

*An introduction to the baseline statistical concepts used in machine learning, from distribution to regression. What does it mean to be “unsupervised”? How do we evaluate a model?*

### Readings

Meredith Broussard, “Machine Learning: The DL on ML,” in *Artificial Unintelligence: How Computers Misunderstand the World* (Cambridge, Massachusetts & London, England: The MIT Press, 2018).

Wendy Hui Kyong Chun, excerpt from *Discriminating Data: Correlation, Neighborhoods, and the New Politics of Recognition*

# Resources

We'll maintain here a running list of resources at the intersection of . . .



*Image created by [Nick Budak](#). Inspired by the first issue of [Computers & the Humanities](#), a journal that ran from 1966–2004.*

. . . particularly those that focus on 1) the uses of machine learning in humanities research, and 2) critical, historical, and ethical frameworks for analyzing the consequences of machine learning techniques being deployed in the world today.

## Contents

- [Readings](#) 📖
- [Data Sets & Data Work](#) 📊
  - [Campus Resources](#)
  - [General Portals for Humanities Data](#)
- [Technical Instruction](#) ⚙️

# Glossary

*The following glossary is collaboratively edited by CDH researchers in [this Google doc](#). Because it's still a work in progress, please feel free to comment in the doc to add terms, questions, or clarifications. 🙌*

---

## artificial intelligence

"The field of developing computers and robots that are capable of behaving in ways that both mimic and go beyond human capabilities. AI-enabled programs can analyze and contextualize data to provide information or automatically trigger actions without human interference. Today, artificial intelligence is at the heart of many technologies we use, including smart devices and voice assistants such as Siri on Apple devices." [Source](#)

## benchmark

"In this paper we describe a benchmark as a particular combination of a dataset or sets of datasets (at least test data, sometimes also training data), and a metric, concep-



**data science**

**digital humanities**

**data science**

computer vision

natural language processing

data visualization

machine learning

data preservation

the use of **computational  
methods** in the humanities

**digital humanities**

&

the **humanistic critique** of  
emerging technologies

digital humanities

↳ computational  
methods

- automated image recognition using computer vision ([Tilton et al. 2019](#))
- NLP: natural language processing ([So 2020](#))
- network analysis ([Boswell 2021](#))
- data visualization, sonification, and physicalization ([Hinrichs et al. 2018](#))

## digital humanities

↳ humanistic  
critique

- machine learning biases against BIPOC ([Benjamin 2019](#))
- digital surveillance & facial recognition ([Boyles 2019](#))
- technologies of mass incarceration ([Ahmed et al. 2018](#))
- misinformation & social media ([Hannah 2021](#))

## humanistic critique

- machine learning biases against BIPOC ([Benjamin 2019](#))
- digital surveillance & facial recognition ([Boyles 2019](#))
- technologies of mass incarceration ([Ahmed et al. 2018](#))
- misinformation & social media ([Hannah 2021](#))

## computational methods

- automated image recognition using computer vision ([Tilton et al. 2019](#))
- NLP: natural language processing ([So 2020](#))
- network analysis ([Boswell 2021](#))
- data visualization, sonification, and physicalization ([Hinrichs et al. 2018](#))



Of | man's | first diso|bedience | and the | fruit Of |  
for|bidden | tree | whose | mortal | taste Brought | de  
into the | world | and | all our | woe | Sing | Heavenly | M

Ov mánz férst disobédiens, and ðe frúit	0-1-, $\frac{1}{2}$ -0,01,00-0-,0-1-
Ov ðát ferbíd'n tré, huuz mértal tást	0- $\frac{1}{2}$ -,01,0- $\frac{1}{2}$ -,0-1,0-1-
Brét détt intu ðe wúrlð, and éll ʒr wó	$\frac{1}{2}$ -1-,00-,0-1-,0- $\frac{1}{2}$ -,0-1-
Wið lós ov 'Ed'n, til wun gráter mán	0- $\frac{1}{2}$ -,0-1,0-0-,0-1,0-1-

“ Of | Mān's fīrst | dīso|bēdiēnce, | ʃǎnd thē | fru

“ Of | thāt for|bīddēn | Trēe, whōse | mōrtāl | tāste

Of man's first disobedience, and the fruit

o 2 1 o o 2 o o 2

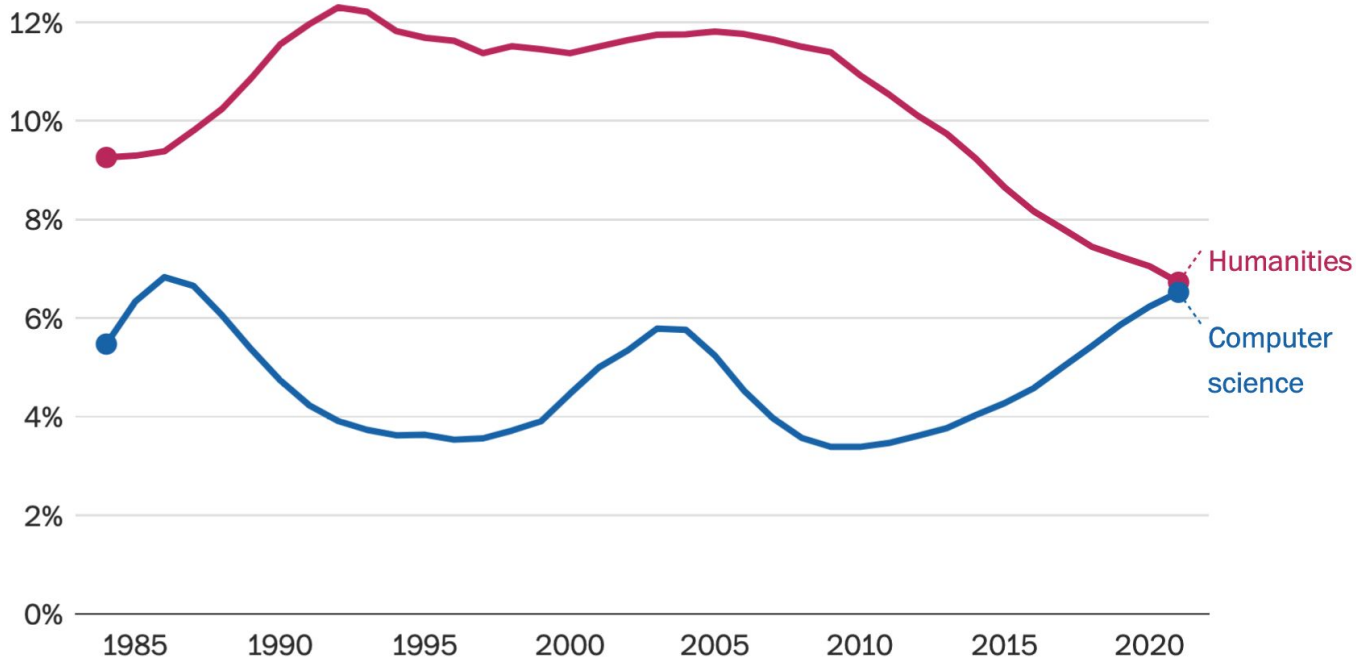
Of that forbidden tree, whose mortal taste



A	B	C	D	E	F	G	H	I	J	K	L	M	N	O	P	Q	R
author_dob	author_dod	author_fname	author_lname	author_role	id	meta_genre	meta_period	meta_rhyme	num_lines	title_edition	title_figure	title_hi	title_main	title_sub			
1840	1928	Thomas	Hardy	orig.	Z200136720	Sonnet	Later Ninete	y	14	Collected poems (1930): WESSEX POEM		SHE, TO HIM I					
1840	1928	Thomas	Hardy	orig.	Z200136721	Sonnet	Later Ninete	y	14	Collected poems (1930): WESSEX POEM		SHE, TO HIM II					
1840	1928	Thomas	Hardy	orig.	Z200136722	Sonnet	Later Ninete	y	14	Collected poems (1930): WESSEX POEM		SHE, TO HIM III					
1840	1928	Thomas	Hardy	orig.	Z200136723	Sonnet	Later Ninete	y	14	Collected poems (1930): WESSEX POEM		SHE, TO HIM IV					
1585	1649	William	Drummond	orig.	Z200139958	Sonnet	Tudor 1500-	y	14	The Poetical Works (1921,Åi1929)		[Like Sophocles (the hearers in a trance)]					
1810	1871	Henry	Alford	orig.	Z200140499	Sonnet	Mid Ninete	y	14	Poems and Poetical Fragments (1833)		SONNET	WRITTEN AT A DISTANCE FROM HOME.				
1810	1871	Henry	Alford	orig.	Z200140502	Sonnet	Mid Ninete	y	14	Poems and Poetical Fragments (1833)		SONNET.	[Lady, I may not but indite to thee]				
1824	1889	William	Allingham	orig.	Z200142302	Sonnet	Mid Ninete	y	14	Thought and Word [etc.] (1890)		A NURSERY RHYME FOR THE ELDERS.					
1886	1918	Joyce	Kilmer	orig.	Z200142541	Sonnet	Twentieth-C	y	14	[Poems, in] Memories of my son Serge		VALENTINE, 1915					
1794	1878	William Cull	Bryant	orig.	Z200145561	Sonnet	Mid Ninete	y	14	The Poetical Works (1903)		TO COLE, THE PAINTER, DEPARTING FOR EUROPE.					
1794	1878	William Cull	Bryant	orig.	Z200145718	Sonnet	Mid Ninete	y	14	The Poetical Works (1903)		A SONNET.					
1779	1843	Washington	Allston	orig.	Z200145979	Sonnet	Early Ninete	y	14	Lectures on art, and poems (1850)		SONNET.	THE FRENCH REVOLUTION.				
1779	1843	Washington	Allston	orig.	Z200145980	Sonnet	Early Ninete	y	14	Lectures on art, and poems (1850)		SONNET.	THOUGHT.				
1779	1843	Washington	Allston	orig.	Z200145981	Sonnet	Early Ninete	y	14	Lectures on art, and poems (1850)		SONNET.	A SMILE.				
1779	1843	Washington	Allston	orig.	Z200145982	Sonnet	Early Ninete	y	14	Lectures on art, and poems (1850)		SONNET.	ART.				
1779	1843	Washington	Allston	orig.	Z200145989	Sonnet	Early Ninete	y	14	Lectures on art, and poems (1850)		SONNET	ON THE STATUE OF AN ANGEL, BY BIENAIMVá,				
1779	1843	Washington	Allston	orig.	Z200145990	Sonnet	Early Ninete	y	14	Lectures on art, and poems (1850)		SONNET	ON THE LATE S. T. COLERIDGE.				
1779	1843	Washington	Allston	orig.	Z200145991	Sonnet	Early Ninete	y	14	Lectures on art, and poems (1850)		SONNET.	IMMORTALITY.				
1779	1843	Washington	Allston	orig.	Z200146018	Sonnet	Early Ninete	y	14	The Sylphs of the Seasons with other pi		SONNET	On a Falling Group in the Last Judgment of Michael				
1779	1843	Washington	Allston	orig.	Z200146019	Sonnet	Early Ninete	y	14	The Sylphs of the Seasons with other pi		SONNET	On the Group of the Three Angels before the Tent of				
1779	1843	Washington	Allston	orig.	Z200146020	Sonnet	Early Ninete	y	14	The Sylphs of the Seasons with other pi		SONNET	On seeing the Picture of vUolus by Peligrino Tibaldi,				
1779	1843	Washington	Allston	orig.	Z200146021	Sonnet	Early Ninete	y	14	The Sylphs of the Seasons with other pi		SONNET	On Rembrant; occasioned by his Picture of Jacob's D				
1779	1843	Washington	Allston	orig.	Z200146022	Sonnet	Early Ninete	y	14	The Sylphs of the Seasons with other pi		SONNET	On the Luxembourg Gallery.				
1779	1843	Washington	Allston	orig.	Z200146023	Sonnet	Early Ninete	y	14	The Sylphs of the Seasons with other pi		SONNET	To my venerable Friend, the President of the Royal A				
1886	1916	Alan	Seeger	orig.	Z200146054	Sonnet	Twentieth-C	y	14	Poems (1917)		SONNET I					
1886	1916	Alan	Seeger	orig.	Z200146055	Sonnet	Twentieth-C	y	14	Poems (1917)		SONNET II					
1886	1916	Alan	Seeger	orig.	Z200146056	Sonnet	Twentieth-C	y	14	Poems (1917)		SONNET III					
1886	1916	Alan	Seeger	orig.	Z200146057	Sonnet	Twentieth-C	y	14	Poems (1917)		SONNET IV					
1886	1916	Alan	Seeger	orig.	Z200146058	Sonnet	Twentieth-C	y	14	Poems (1917)		SONNET V					
1886	1916	Alan	Seeger	orig.	Z200146059	Sonnet	Twentieth-C	y	14	Poems (1917)		SONNET VI					
1886	1916	Alan	Seeger	orig.	Z200146060	Sonnet	Twentieth-C	y	14	Poems (1917)		SONNET VII					
1886	1916	Alan	Seeger	orig.	Z200146061	Sonnet	Twentieth-C	y	14	Poems (1917)		SONNET VIII					
1886	1916	Alan	Seeger	orig.	Z200146062	Sonnet	Twentieth-C	y	14	Poems (1917)		SONNET IX					

## Oh, the humanities!

Share of bachelor's degrees, by major



Note: doesn't include second majors; computer science includes computer and electrical engineering

Source: [Ben Schmidt's analysis of data from the National Center for Education Statistics](#)

DEPARTMENT OF DATA / THE WASHINGTON POST

THE CENTER  
FOR DIGITAL  
HUMANITIES  
@PRINCETON

# A STUDY IN ENGLISH METRICS 21

TABLE I.

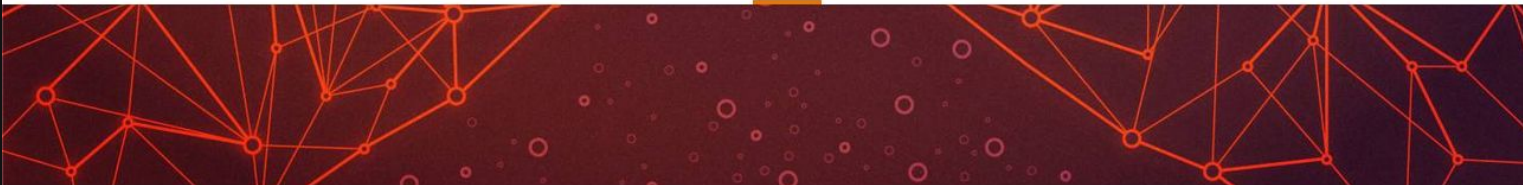
MILTON	Total No. of words	Per cent Mono- dissyllabic	Per cent Polysyllabic
Paradise Lost I.....	5,960	91.67	8.33
II.....	7,917	92.24	7.75
III.....	5,566	92.07	7.92
IV.....	7,700	92.74	7.24
V.....	6,804	92.01	7.99
VI.....	6,773	90.95	9.03
VII.....	4,774	91.40	8.58
VIII.....	4,921	91.45	8.53
IX.....	9,010	93.01	6.98
X.....	8,370	91.74	8.24
XI.....	6,859	92.48	7.50
XII.....	4,930	91.78	8.21
Total.....	79,584	92.03	7.95
Samson Agonistes			
Dialogue.....	9,465	92.04	7.94
Choruses.....	3,427	90.92	9.08
Total.....	12,892	91.75	8.23

*Eras in English Poetry*

	1500-40	1540-70	1570-00	1600-40	1640-70	1670-00	1700-40	1740-70	1770-00	1800-40	1840-70	1870-00	1900-40
PHRASAL				Fletcher	Milton		Thomson Somerville	T. Warton Armstrong		Hemans	Tennyson		
						Wesley	Dyer	J. Warton	Bowles	Keats	Whitman		
				Sylvester	More	Blackmore	Prior	Collins Lyttleton Mason Gray Akenside	Blake			Wilde	Moore Pound
BALANCED	Hawes		Spenser		Waller			Shenstone	Southey	Shelley	Poe	Swinburne	E. Sitwell
	Dunbar		Shakespeare			Dryden	Pope		Goldsmith		Arnold	Bridges	Yeats
	Douglas	Sackville	Hall			Marvell	Parnell	Johnson	Crabbe	Bryant		Hopkins	Stevens
			Sandys	Crashaw	Pomfret	Addison	Young		Wordsworth	Campbell		Phillips	Eliot
									Rogers	Macaulay		Thompson	
									Burns	Scott	Longfellow	Dickinson	
									Chatterton	Emerson			
CLAUSAL	Barclay	Lindsay		Quarles		Roscommon	Gay		Coleridge	Byron	Meredith		Cummings
	Lydgate	Gascoigne	Sidney	Carew	Lovelace	Crech				Moore	E. Browning		Frost
	Chaucer	Baldwin	Drayton	Herrick	Denham	Walsh					R. Browning		Auden
	Sternhold	Heywood	Chapman	Shirley	Vaughan	Oldham						Hardy	
	Skelton	Wyatt	Marlowe	Harvey	Cleveland					Landor	Rossetti	Housman	Millay
	Ballad	Surrey	Daniel	Wither	Suckling								
	Langland	Breton	Donne	Herbert	Cowley								
		Googe	Jonson										
	Turberville												

Josephine Miles

Fig 3. From Josephine Miles, "Eras in English Poetry," *PMLA* 70 no. 4 (1955): 861.



# DataX effort jumpstarts demonstration data science project at Princeton

*Image by Kyle McKernan, Office of Communications*

**The Office of Communications**

Feb. 27, 2019, noon

---

**Princeton University researchers will push the limits of data science by leveraging artificial intelligence and machine learning across the research spectrum in an interdisciplinary pilot project made possible through a major gift from Schmidt Futures.**

The Schmidt DataX Fund will help advance the breadth and depth of data science impact on campus, accelerating discovery in three large, interdisciplinary research efforts and creating a suite of opportunities to educate, train,



CURRICULUM



## With Student Interest Soaring, Berkeley Creates New Data-Sciences Division

By *Alexander C. Kafka* | NOVEMBER 1, 2018



PHOTO BY JUSTIN SULLIVAN, GETTY IMAGES

**More and more students at Berkeley are interested in data science, officials there say.**

The University of California at Berkeley today announced a new Division of Data Science and Information. It is the university's largest program change in decades and helps secure its status among the country's top data science research and

CHRONICLE LIST



## Recent Private Gifts to Higher Education: U. of Virginia Gets \$120 Million for Data Science

By *Chronicle Staff* | JANUARY 27, 2019

Among the latest largest gifts are \$120 million to create a new School of Data Science at the University of Virginia, \$30 million to help build Spelman College's new Center for Innovation & the Arts, \$10 million to provide need-based scholarships at the University of Kentucky, and \$6.9 million to support research at the University of Kansas into the earliest human presence in parts of the United States.

